



Date: May 1, 2012

Product Clarification

Dear Beckman Coulter Customer,

This letter contains updated information from the Product Clarification letter dated March 26, 2012. The updated information is in the Additional Information section below.

Product: Avanti J series rotors (see attached part number list)

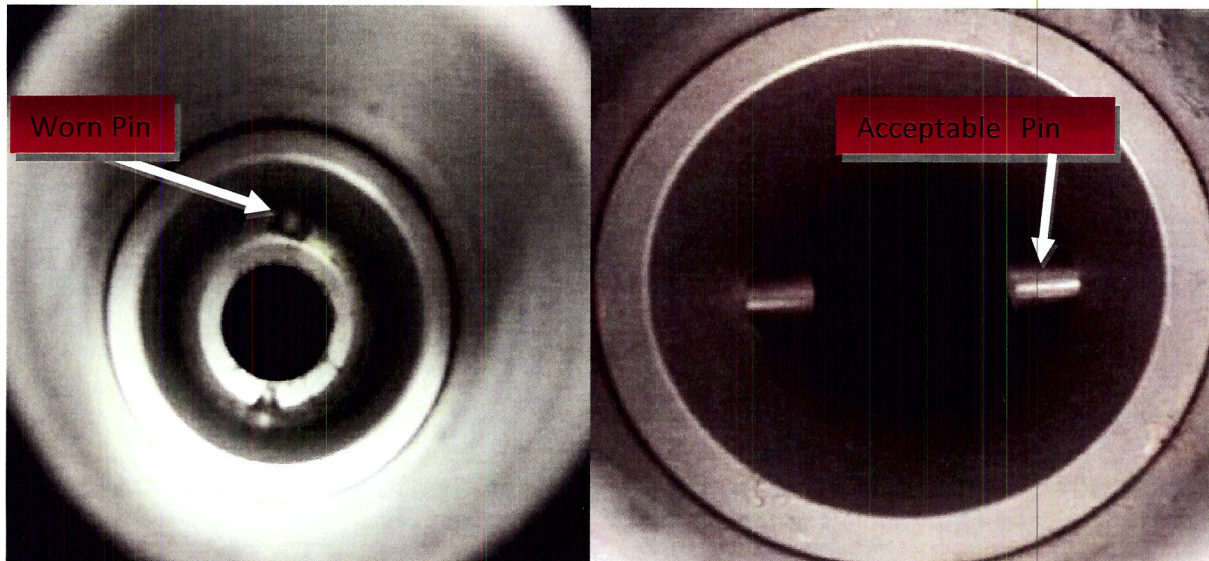
DESCRIPTION

The Avanti J series rotors have rotor drive pins that help connect the rotor to the spindle. Damaged and worn drive pins can prevent the rotor from seating properly on the centrifuge drive hub and allow it to continue rotating after the drive has stopped. This letter is to provide additional information on how to visually inspect the rotor drive pin wear and helpful hints for safe use of the Avanti J series centrifuges.

ACTION/RESOLUTION

1. Before using the rotor, inspect the rotor drive pins to ensure that they are not damaged.
2. To inspect the drive pins, turn the rotor upside down and look into the drive hole in the center of the rotor. If the drive pins appear damaged, contact Beckman Coulter Field Service. Damaged pins can be recognized by missing material, significant chipping, deformed geometry (deformed shape, missing pin).

The below pictures illustrate some examples of worn and acceptable drive pins.



Additional Information:

1. The rotors are warranted for 7 years when used and maintained in accordance with the user manual. Many factors can influence the condition of your rotor. We recommend you contact your local Beckman Coulter Service Engineer for a rotor inspection through our Field Rotor Inspection Program (FRIP)
2. Never exceed the maximum rated speed of the rotor and labware in use. Refer to the rotor user manual for specific ratings for each rotor.
3. Be careful when opening the lid of the centrifuge in case the rotor is continuing to spin.
4. Never attempt to slow or stop the rotor with your hand or any other object. Allow it to coast to a stop.

Please share this information with your laboratory staff and retain this notification as appropriate.

If you have any questions regarding this notice, please contact the Beckman Coulter Technical Support at (800) 369-0333 in the United States and Canada or contact your local Beckman Coulter Representative.

Sincerely,

Jack Rogers
Regulatory Affairs Manager



Date: May 1, 2012

Product Clarification

Product: Avanti J Series Rotors Parts List

Part Number:	Description:
393033	F10BCI-6x500y FIBERLite Rotor, 6 x 500 mL, 10,000 rpm, 17,700 x g
369687	JA-10 Rotor, Fixed Angle, 6 x 500 mL, 10,000 rpm, 17,700 x g
360992	JA-12 Rotor, Biosafety Lid, 12 x 50 mL, 12,000 rpm, 23,200 x g
360993	JA-12 Rotor, Single Lock Lid, 12 x 50 mL, 12,000 rpm, 23,200 x g
339247	JA-14 Rotor, Biosafety Lid, 6 x 250 mL, 14,000 rpm, 30,100 x g
369691	JA-17 Rotor, Biosafety Lid, 14 x 50 mL, 17,000 rpm, 39,800 x g
369679	JA-18 Rotor, Biosafety Lid, 10 x 100 mL, 18,000 rpm, 47,900 x g
347824	JA-18.1 Rotor, Fixed Angle, 24 x 1.8 mL, 18,000 rpm, 42,100 x g
334831	JA-20 Rotor, Biosafety Lid, 8 x 50 mL, 20,000 rpm, 48,400 x g
342095	JA-20.1 Rotor, Biosafety Lid, 32 x 15 mL, 20,000 rpm, 51,500 x g
334845	JA-21 Rotor, Fixed Angle, 18 x 10 mL, 21,000 rpm, 50,400 x g
363050	JA-25.15 Rotor, Biosafety Lid, 24 x 15 mL, 25,000 rpm, 74,200 x g
363054	JA-25.15 Rotor, Single Lock Lid, 24 x 15 mL, 25,000 rpm, 74,200 x g
363058	JA-25.50 Rotor, Biosafety Lid, 8 x 50 mL, 25,000 rpm, 75,600 x g
363055	JA-25.50 Rotor, Single Lock Lid, 8 x 50 mL, 25,000 rpm, 75,600 x g
363420	JA-30.50 Ti Rotor, Biosafety Lid, 8 x 50 mL, 30,000 rpm, 108,860 x g
363421	JA-30.50 Ti Rotor, Single Lock Lid, 8 x 50 mL, 30,000 rpm, 108,860 x g
356900	JE-5.0 Elutriator Rotor, 5,000 rpm, 4,700 x g
347514	JE-6B Elutriator Rotor, 6,000 rpm, 5,080 x g
369681	J-LITE® JLA-10.500 Rotor, Biosafety, 6x500 mL, 10,000 rpm, 18,600 x g
363930	J-LITE® JLA-16.250 Rotor, Biosafety, 6x250 mL, 16,000 rpm, 38,400 x g
363934	J-LITE® JLA-16.250 Rotor, Single Lock, 6x250mL, 16,000 rpm, 38,400 x g
969328	J-LITE® JLA-8.1000 Rotor, Fixed Angle, 6x1,000mL, 8,000rpm, 15,970 x g
969329	J-LITE® JLA-8.1000 Rotor, Fixed Angle, 6x1,000mL, 8,000rpm, 15,970 x g
969330	J-LITE® JLA-9.1000 Rotor, 4 x 1,000 mL, 9,000 rpm, 16,800 x g
969331	J-LITE® JLA-9.1000 Rotor, 4 x 1,000 mL, 9,000 rpm, 16,800 x g
346963	JS-13.1 Rotor & Handle, Swinging-Bucket, 6x50mL, 13,000rpm, 26,500 x g
362396	JS-24.15 Rotor & Buckets, 6 x 15 mL, 24,000 rpm, 110,500 x g
360743	JS-24.38 Rotor & Buckets, 6 x 38.5 mL, 24,000 rpm, 103,900 x g

339081	JS-3.0 Rotor & Buckets, Biosafety, Unshielded, 3,000 rpm, 2,560 x g
339086	JS-4.0 Rotor & Buckets, Biosafety, 4 x 1000mL, 4,000 rpm, 4,050 x g
339080	JS-4.2 Rotor & Buckets, 6 x 1000 mL, 4,200 rpm, 5,020 x g
366695	JS-4.2A ARIES™ Rotor & Buckets, 6 x 1000 mL, 4,200 rpm, 5,020 x g
348394	JS-4.2SM Rotor with Buckets, Swinging-Bucket, 4,200 rpm, 4,900 x g
366670	JS-4.2SMA ARIES™ Rotor & Buckets, Swinging-Bucket, 4,200rpm, 4,900 x g
362734	JS-4.3 Rotor & Buckets, Biosafety Lid, 4x750 mL, 4,300 rpm, 4,220 x g
367820	JS-5.0 Rotor Package, Swinging-Bucket, 4 x 2.25L, 5,000 rpm, 7,480 x g
339087	JS-5.2 Rotor & Buckets, Windshield Biosafety Lid, 5,200 rpm, 6,840 x g
368690	JS-5.3 Rotor & Buckets, Swinging-Bucket, 4x500mL, 5,300 rpm, 6,870 x g
369314	JS-5.3 Rotor with Microplate Kit, Swinging-Bucket, Aluminum, 24 x 96-Well Plates, 5,300 rpm, 6,130 x g
369331	JS-5.9 Rotor Pkg, Swinging-Bucket, 10x96-Well, 5,900 rpm, 6,570 x g
336380	JS-7.5 Rotor Pkg, Swinging-Bucket, 4 x 250 mL, 7,500 rpm, 10,400 x g